



# NIKE GOLF

## ELITE JUNIOR GOLF CAMP

July 20th -24th 2009

### CoreGolf ACADEMY



### Canadian PGA Instructional Coaching Staff 2009

Core Golf Academy is a Canadian-owned industry leader in teaching golf and making a positive difference in people's lives. Core Golf includes: The Core Golf Junior Academy, which provides premium private high-school education and golf training academy in Orlando, Florida, and teaching programs at The Core Golf Academy at Piper's Heath Golf Club in Oakville, Ontario and The Core Golf Downtown Academy in Toronto. Core Golf instructional programs are built around core values of excellence, integrity and dedication that revolve around strength of character, mind and body.

#### The Core Golf Academy Staff (Canada & USA)

**Jeff Hay** - Canadian PGA Class 'A' Member  
Director of Operations

**Ryan Cater** - Canadian PGA Class 'A' Member  
Director of Instruction - The Core Golf Academy at Piper's Heath  
\*Appleby College Golf Team Program Coach

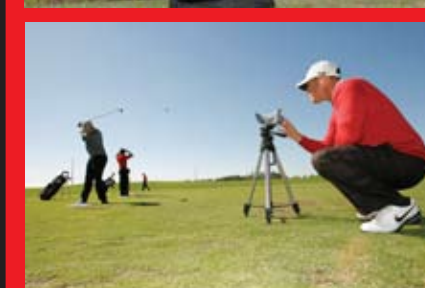
**Sean Foley** - Canadian PGA & Teacher of the year 2008  
Director of Instruction - The Core Golf Academy - Orlando, Florida  
PGA, LPGA, Canadian, Nationwide & various tour professional coach.

Teaching Staff:	Home Academy Location:	Certification:
Conor O'Shea	Piper's Heath Teaching Professional	Canadian PGA
Matt Daniels	Piper's Heath Teaching Professional	Canadian PGA
Rob Bernard	Piper's Heath Teaching Professional	CPGA Class 'A'
Annie Mallory	Piper's Heath Teaching Professional	Tour Pro
Ernie Fairles	Piper's Heath Teaching Professional	Canadian PGA
Tom Schupp	Piper's Heath -Apprentice Professional	Tour Pro
Ed Maunder	The Core Golf Downtown Academy	CPGA & Tour

#### Physical Fitness & Golf Conditioning Coaches:

Dr. Jason Lemieux - Chiropractor - Physiomed, Oakville

\*Special Guest Speakers for the weeks camp to be announced.  
\*Nike Golf Demo day and range party July 24, 2009



www.coregolfacademy.com

All programs are powered by:



GOLF INSTRUCTION PROVIDED BY CORE GOLF ACADEMY - CANADA

#### For July 20-24 2009 Elite Junior NIKE GOLF CAMP REGISTRATION:

To speed the application process, apply on-line at [ussportscamps.com](http://ussportscamps.com).

It's quick and easy! Nike Sports Camps offers a registration option just right for you.

Phone: 1-800-NIKE CAMP (645-3226) Fax: 415-479-6061

NIKE JUNIOR GOLF CAMPS

## Nike Golf Camp 2009

### Elite Junior Day & Overnight

[Co-Ed, Ages 12-17, Intermediate and Advanced Players]

US Sports Camps operator of Nike Golf Camps has partnered with Core Golf Academy to provide young aspiring golfers with an outstanding special golf experience week. An expert certified Canadian PGA instructional staff will provide every player with the tools to improve their games and take their play to the next level.

Core Golf instructors bring a wealth of experience in university play and professional instruction, and more importantly have demonstrated an ability to convey golf principles to younger golfers. The instructors aim to be mentors to the participants in the future as well. The camp curriculum provides the perfect blend of appropriate and targeted instructional techniques, course play and fun activities. This advanced program is designed to mimic the experiences of being away from home on a golf scholarship and playing at an elite competitive level.

The Nike Golf Camp experience offers a positive and fun learning environment in which campers thrive under the direction of highly motivated trained instructors and counsellors under 24-hr supervision. The combined facilities of Appleby College and the highly acclaimed Piper's Heath Golf Course, located only 15 minutes from the college, ensure that participants receive the best resources available for their golf, fitness training, meal experiences, and all in a welcoming and highly secure location.

Our golf instructors have the experience in programming that allows every golfer the same opportunity to succeed. All programs are custom designed to suit the ability of the individual player. A maximum of 6:1 student/ instructor ratio ensures a quality experience including individual attention, repetition, practice time, state-of-the-art video analysis and course play. Whether hitting the first truly pure golf shot, establishing consistency with a certain facet of the game or fine tuning the swing to gain extra precision and power, there is something to assist every golfer in reaching the next level.

#### TYPICAL DAILY SCHEDULE :

- 7:30 am Wake up & Breakfast
- 9:00 am Camp meeting at practice facility, skills demonstrations from staff focusing on key elements of the swing for the day.
- 8:30 am Instruction - campers rotate stations working on putting, chipping, pitching, bunker play and the full swing.
- 12:00 pm Lunch Break
- 1:00 pm Course play (9 to 18 holes daily). Staff to provide instruction.
- 6:00 pm Dinner, relaxation, free time, guest speakers, seminars
- 8:00 pm Evening activities. Movies, field games, other sports.
- 10:00 pm Lights out.

\*Daily schedules and specific evening activities will vary by day.

Location:  
Oakville, Ontario, Canada  
[www.appleby.on.ca](http://www.appleby.on.ca)  
Piper's Heath Golf Club  
[www.pipersheath.com](http://www.pipersheath.com)



#### Directions to Appleby College:

From Toronto Int'l Airport:  
Hwy 427 South to QEW Hwy West  
Exit at Dorval Rd South (left)  
Lakeshore Rd, turn right (west)  
2511 Lakeshore Rd West on left hand side.  
Enter main gates, follow signs.

From Hamilton Int'l Munro Airport  
Hwy 403 East Toronto to QEW Hwy East  
Exit at Dorval Rd South (right)  
Lakeshore Rd, turn right (west)  
2511 Lakeshore Rd West on left hand side.  
Enter main gates, follow signs.

Visit school website:  
[www.appleby.on.ca](http://www.appleby.on.ca) or phone 905.845.4681  
for further school or program information.

#### Nike Golf Camp General Information

There is no one road to golf improvement. Nike Golf Camp programs offer a variety of programs designed for the needs of each camper.

Every facet of the game is covered; mornings are spent in small instruction groups working on putting, chipping, bunker play and the full swing. Intermediate and advanced players can immerse themselves in the sport for an entire week. As golf skills develop, so does self-esteem and lasting friendships.

#### Designed by Skill Level

Upon arrival, all participants are evaluated by the director and staff and placed in a program that addresses their own instructional needs.

#### Level I Intermediate Golfers & High School Players

This program is specifically tailored to those golfers who are hoping to make the high school team and those already on the team looking to move up the ladder. Specific attention is given to swing development, course management and developing a positive competitive attitude. Current and soon to be high school or competitive players can sharpen their game and increase their self confidence.

#### Level II - Elite Advanced Players

If you've already got the goods, here's how to make those goods great! For tournament level players with handicaps of 10 or less, this program addresses all aspects of competitive play and is tailor-made for the low handicap player striving to improve their tournament results and graduate to the highest levels required to gain university scholarship or professional playing possibilities.

#### Transportation

Golf Camps programs do not include or provide transportation to or from airports, bus depots or train stations. There are shuttle services you can contact to arrange transportation.

#### Nike Amenity Package & Prizes

All Nike Golf School & Jr. Camp participants receive an amenity package from Nike Golf including a Nike hat, one dozen Nike golf balls and a pocket-size Nike Golf School workbook.

#### Nike Golf Camp Highlights include:

- Instruction from nationally recognized CPGA professionals
  - Small group instruction with low student/teacher ratio
  - Video Swing Analysis on site.
  - Fun, supervised off-course activities
  - Location on prestigious campus of Appleby College
  - 24 hour supervision
- Most importantly: A healthy and positive learning environment designed to help every camper get better!

#### Overnight Accommodation Information:

All accommodations are located on the idyllic 59 acre campus of Appleby College adjacent to the community of Oakville, Ontario, Canada. Students enjoy a fun, friendly and safe learning environment during the heart of the Canadian summer.

Accommodations are double occupancy in the school residence dormitories and are supervised 24 hours a day by the certified counsellors assigned to their group.

Only a 25-minute drive from two International airports, there is easy arrival / departure access. Both the Appleby campus and Piper's Heath Golf Club offer serene countryside settings, yet the city attractions of Toronto just 30 minutes away by car.

#### Round-the-Clock Supervision

Campers are supervised 24 hours a day. The camp counsellors live in the dormitories accommodations with the campers and participate in evening activities.

Drugs, alcohol and tobacco are strictly prohibited, and constitute, along with general misconduct, grounds for immediate dismissal from camp without a refund.

#### Pricing & Contact Information:

Nike Golf Junior Elite Camp 2009  
Date: July 20-24, 2009

Elite Resident Camper	
Double Occupancy Room	\$1100 USD. +5% GST
*Single Occupancy Option	+\$225 Cdn +5% GST
Elite Day Camper	\$1000 USD +5% GST

Extra Day Accommodation Available @ \$60 +GST/night.

It's Easy to Enroll!  
Phone 1.800.NIKE CAMP [ 800.645.3226 ]  
Online at [USSportsCamps.com](http://USSportsCamps.com)

All Your Camp Questions Answered!  
Please call to speak to one of our staff. We can answer all your camp questions and register you at the same time.

Piper's Heath Golf Club

